



3 Salamanca Place, London
SE1

GARTON JONES.COM



3 Salamanca Place, London , SE1

GARTON JONES.COM

9 Albert
Embankment
London
SE1 7SP

Sales +44 (0) 20 7735 1888
nineelms@gartonjones.com
www.gartonjones.com

£425,000 Leasehold

A spacious 1-bedroom apartment of 561sq.ft (52.1sq.m) available for sale in 3 Salamanca Place, a modern riverside development located between Lambeth & Vauxhall Bridges. This property has been tastefully redecorated by the current owner and consists of a large bedroom, an open plan reception room and modern integrated kitchen including white goods with parquet flooring, good built-in storage throughout, and a well-proportioned recently modernised bathroom.

3 Salamanca Place benefits from lift access, secure entry, and the ease of an on-site convenience store, as well as being moments from several vibrant cafes, pubs & shops. Transport links are excellent with the rail and tube services of Vauxhall a short walk away and a frequent bus service to the West End and City on the doorstep.

Please note furniture may differ to that shown in the current photos.

- 1 Bedroom
- 561sq.ft (52.1sq.m)
- Open Plan Reception
- Modern Integrated Kitchen
- Parquet Flooring
- Good Storage
- Bathroom
- Views over Communal Courtyard
- 3rd Floor (With Lift)
- 0.5 Miles to Vauxhall Station

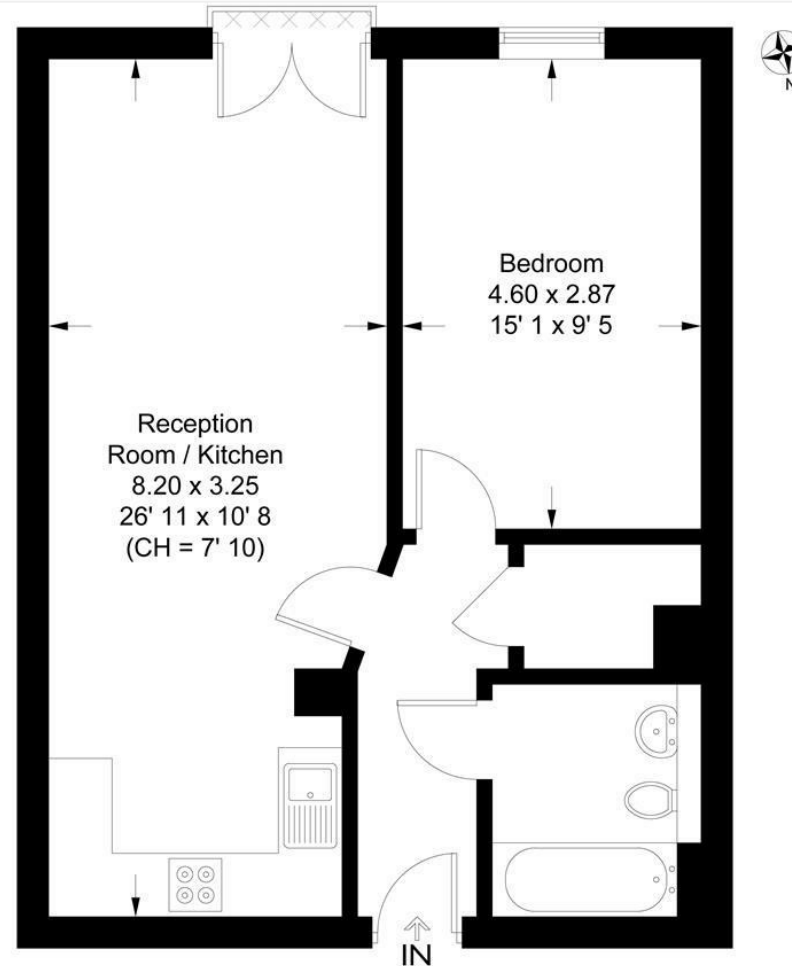


EPC certificate available on request.

Salamanca Place

Approximate Gross Internal Area = 561 sq ft / 52.1 sq m
Balcony = 3 sq ft / 0.3 sq m

GARTON JONES
LONDON



This plan is not to scale and must be used as layout guidance only. All measurements and areas are approximate and should not be relied upon to provide accurate information. This plan must not be relied upon when making property valuations, design considerations or any other such relevant decisions. We accept no responsibility or liability (whether in contract, tort or otherwise) in relation to any loss whatsoever arising from or in connection with any use of this plan or the adequacy, accuracy or completeness of it or any information within it.



